

EXHIBIT D

T STREET, NW

Square: 441 Lots: 32, 33, 35, 852



DRAWING INDEX

- A-00 COVER SHEET
- A-0.2 AERIAL VIEW
- A-0.3 ZONING MAP
- A-0.4 FUTURE LAND USE
- E-01 CONTEXT PHOTOS
- E-02 CONTEXT PHOTOS
- E-03 EXISTING FACADE PHOTOS - T STREET, NW
- E-04 EXISTING FACADE PHOTOS - WILTBERGER ST, NW
- A-01 SITE PLAN
- A-02 FIRST FLOOR PLAN
- A-03 SECOND FLOOR PLAN
- A-04 THIRD FLOOR PLAN
- A-05 TYPICAL FLOOR PLANS (4-6)
- A-06 SEVENTH FLOOR PLAN
- A-07 PENTHOUSE PLAN
- A-08 GARAGE LEVEL 1
- A-09 GARAGE LEVEL 2
- A-10 EXISTING ELEVATIONS - T STREET, NW
- A-11 EXISTING ELEVATIONS - WILTBERGER STREET, NW
- A-12 NORTH BUILDING ELEVATION
- A-13 EAST BUILDING ELEVATION
- A-14 SOUTH BUILDING ELEVATION
- A-15 WEST BUILDING ELEVATION
- A-16 NORTH RENDERED ELEVATION
- A-17 EAST RENDERED ELEVATION
- A-18 SOUTH RENDERED ELEVATION
- A-19 WEST RENDERED ELEVATION
- A-20 STREET SECTION
- A-21 BUILDING SECTION
- A-22 BUILDING SECTION
- A-23 EXISTING BUILDING SECTIONS
- A-24 ENLARGED EXISTING BUILDING 610 SECTION
- A-25 ENLARGED EXISTING BUILDING 618 SECTION
- A-26 RENDERING
- A-27 RENDERING
- A-28 ENLARGED ROOFTOP PLAN AND SECTION

T STREET, NW

COVER SHEET | A-00

12-08-2015

T Street, NW
 Washington, DC 20018
 Square: 441 Lot No: 32, 33, 35, 852 Zone: C-2-B/ARTS



PGN Architects, PLLC
 210 7th Street SE - Suite 201
 Washington, DC 20003
 (P) 202-622-0883 (F) 202-622-0868



Manorland Realty
 1300 K Street, NW - Suite 600
 Washington, DC 20005
 (P) 202-777-2000 (F) 202-777-2000

COPYRIGHT © 2015 PGN ARCHITECTS, PLLC



T STREET, NW

AERIAL VIEW A-0.2

T Street, NW
 Washington, DC 20018
 Square: 411 Lot No: 32, 33, 35, 36 Zone: C-2-B / ARTS



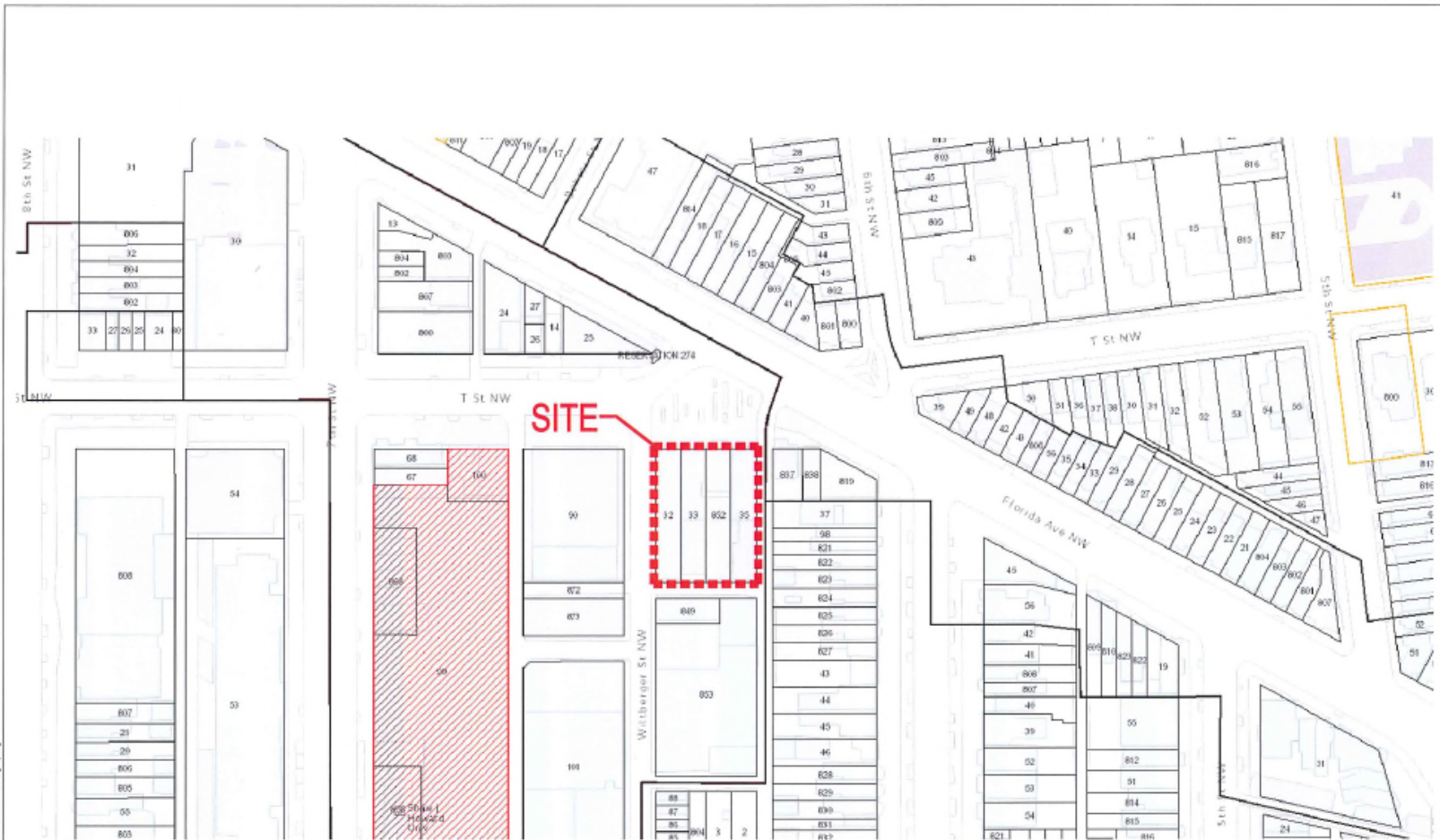
PGN Architects, PLLC
 215 7th Street SE - Suite 201
 Washington, DC 20003
 (P) 202-632-8988 (F) 202-632-8908



Mansueto Realty
 1700 K Street, NW - Suite 800
 Washington, DC 20006
 (P) 202-777-0090 (F) 202-777-0038

12-08-2015

© 2015 PGN Architects, PLLC. All rights reserved.



SITE

T STREET, NW

T Street, NW
 Washington, DC 20018
 Square: 441 Lot No: 32, 33, 35, 36 Zone: C-2B / ARTS

ZONING MAP A-0.3

12-08-2015

© 2015 PGN Architects, PLLC
 All rights reserved. No part of this document may be reproduced without written permission from PGN Architects, PLLC.

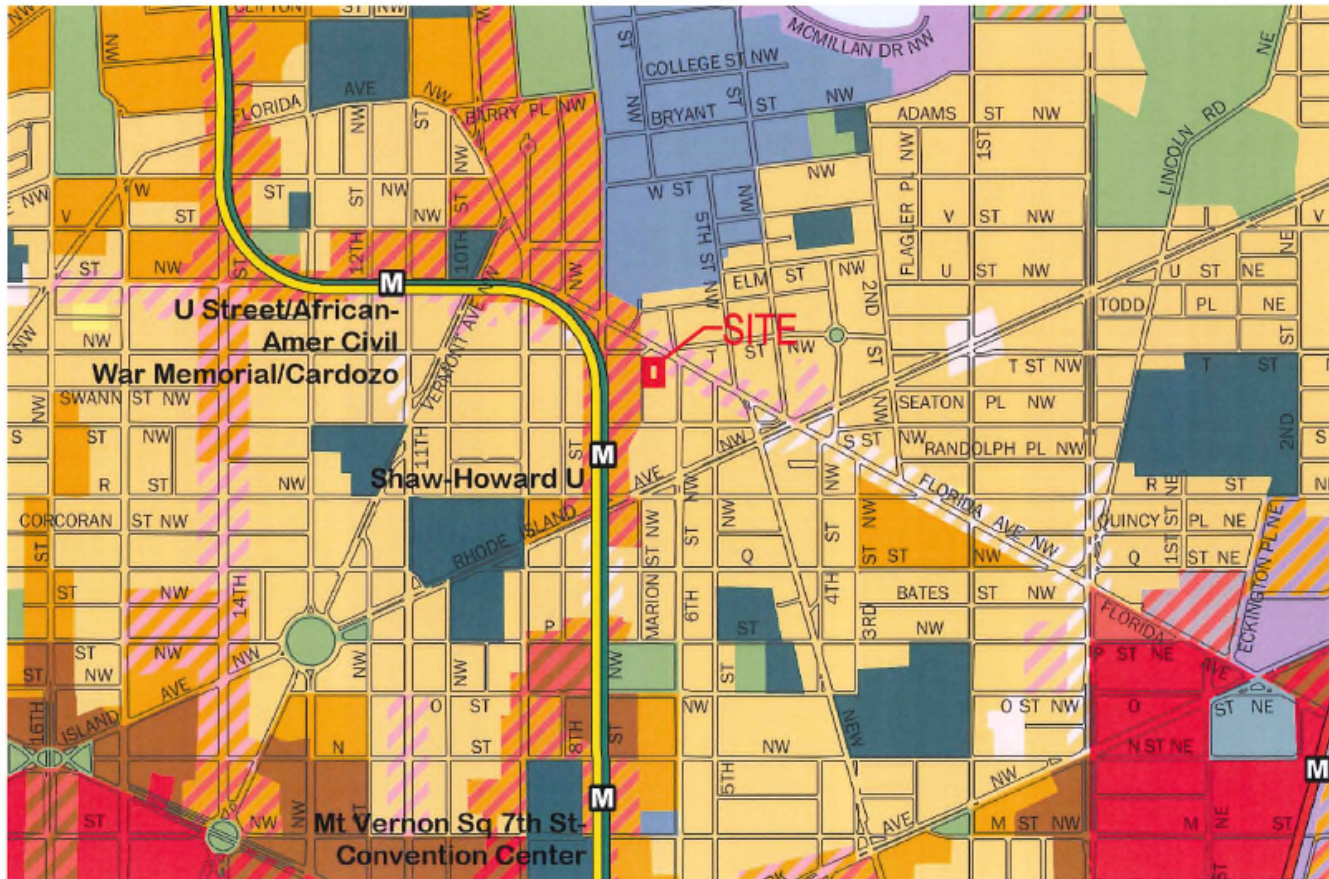


PGN Architects, PLLC
 210 7th Street SE - Suite 201
 Washington, DC 20003
 (P) 202-622-6889 (F) 202-622-6908



Manorment Realty
 1700 K Street, NW - Suite 800
 Washington, DC 20006
 (P) 202-777-2000 (F) 202-777-2000

© 2015 PGN ARCHITECTS, PLLC



T STREET, NW

FUTURE LAND USE MAP

A-0.4

T Street, NW
 Washington, DC 20018
 Square: 441 Lot No: 32, 33, 35, 652 Zone: C-2B / ARTS



PGN Architects, PLLC
 215 7th Street SE - Suite 201
 Washington, DC 20003
 (P) 202 632 8888 (F) 202 632 0908



McManis + Partners
 1700 K Street, NW - Suite 800
 Washington, DC 20006
 (P) 202 777 2600 (F) 202 777 2620

© 2015 PG&P ARCHITECTS, PLLC
 ALL RIGHTS RESERVED. THIS DOCUMENT IS THE PROPERTY OF PG&P ARCHITECTS, PLLC. NO PART OF THIS DOCUMENT MAY BE REPRODUCED OR TRANSMITTED IN ANY FORM OR BY ANY MEANS, ELECTRONIC OR MECHANICAL, WITHOUT THE WRITTEN PERMISSION OF PG&P ARCHITECTS, PLLC.

COMPILED BY PG&P ARCHITECTS, PLLC

12-08-2015



1 - CORNER OF 6TH STREET & FLORIDA AVENUE LOOKING SOUTHWEST



2 - CORNER OF 7TH & T STREETS LOOKING SOUTHEAST



3 - FLORIDA AVENUE LOOKING SOUTH



T STREET, NW

T Street, NW
 Washington, DC 20018
 Square: 441 Lot No: S2, S3, S5, S62 Zone: C-2-B / ARTS



PGN Architects, PLLC
 210 7th Street SE - Suite 301
 Washington, DC 20003
 (P) 202-622-8968 (F) 202-622-0908



Monument Realty
 1100 K Street, NW - Suite 900
 Washington, DC 20008
 (P) 202-777-3000 (F) 202-777-3020



1 - CORNER OF 6TH STREET & FLORIDA AVENUE LOOKING NORTHWEST



2 - FLORIDA AVENUE LOOKING SOUTHWEST



3 - S STREET LOOKING NORTH DOWN WILTBERGER STREET



T STREET, NW

CONTEXT PHOTOS E-02

T Street, NW
 Washington, DC 20018
 Square: 441 Lot No: 32, 33, 35, 352 Zone: C-2-B / ARTS



PGN Architects, PLLC
 310 F Street SE - Suite 201
 Washington, DC 20003
 (P) 202-682-2965 (F) 202-682-0900



McCombs Realty
 1100 K Street, NW - Suite 606
 Washington, DC 20006
 (P) 202-777-2006 (F) 202-777-3000

©2015 PGN Architects, PLLC. All rights reserved. PGN-2015-0001-01-01.dwg

COPYRIGHT © 2015 PGN ARCHITECTS, PLLC

608 T ST, NW
LOT 35
TO BE DEMOLISHED



610 T ST, NW
LOT 352
A PORTION OF THE BUILDING TO BE
INCORPORATED INTO THE PROJECT



614 T ST, NW
LOT 33
TO BE DEMOLISHED



618 T ST, NW
LOT 32
A PORTION OF THE BUILDING TO BE
INCORPORATED INTO THE PROJECT



T STREET, NW

EXISTING FACADES - T STREET, NW E-03

T Street, NW
Washington, DC 20015
Square: 441 Lot No: 32, 33, 35, 352 Zone: C-3-B / ARTS



PGN Architects, PLLC
210 P St, NW - Suite 201
Washington, DC 20005
(P) 202-462-0995 (F) 202-462-0900



Manorment Realty
1700 K Street, NW - Suite 600
Washington, DC 20005
(P) 202-777-2000 (F) 202-777-2000

12-08-2015

© 2015 PGN Architects, PLLC
 All rights reserved. No part of this document may be reproduced without the written permission of PGN Architects, PLLC.

COPYRIGHT © 2015 FOR ARCHITECTS, PLLC



T STREET, NW

EXISTING FACADES - WILTBERGER STREET

E-04

T Street, NW
 Washington, DC 20018
 Square: 441 Lot No: 32, 33, 35, 352 Zone: C-2-B / ARTS



PGN Architects, PLLC
 210 7th Street NE - Suite 204
 Washington, DC 20002
 (P) 202-422-0869 (F) 202-422-0800

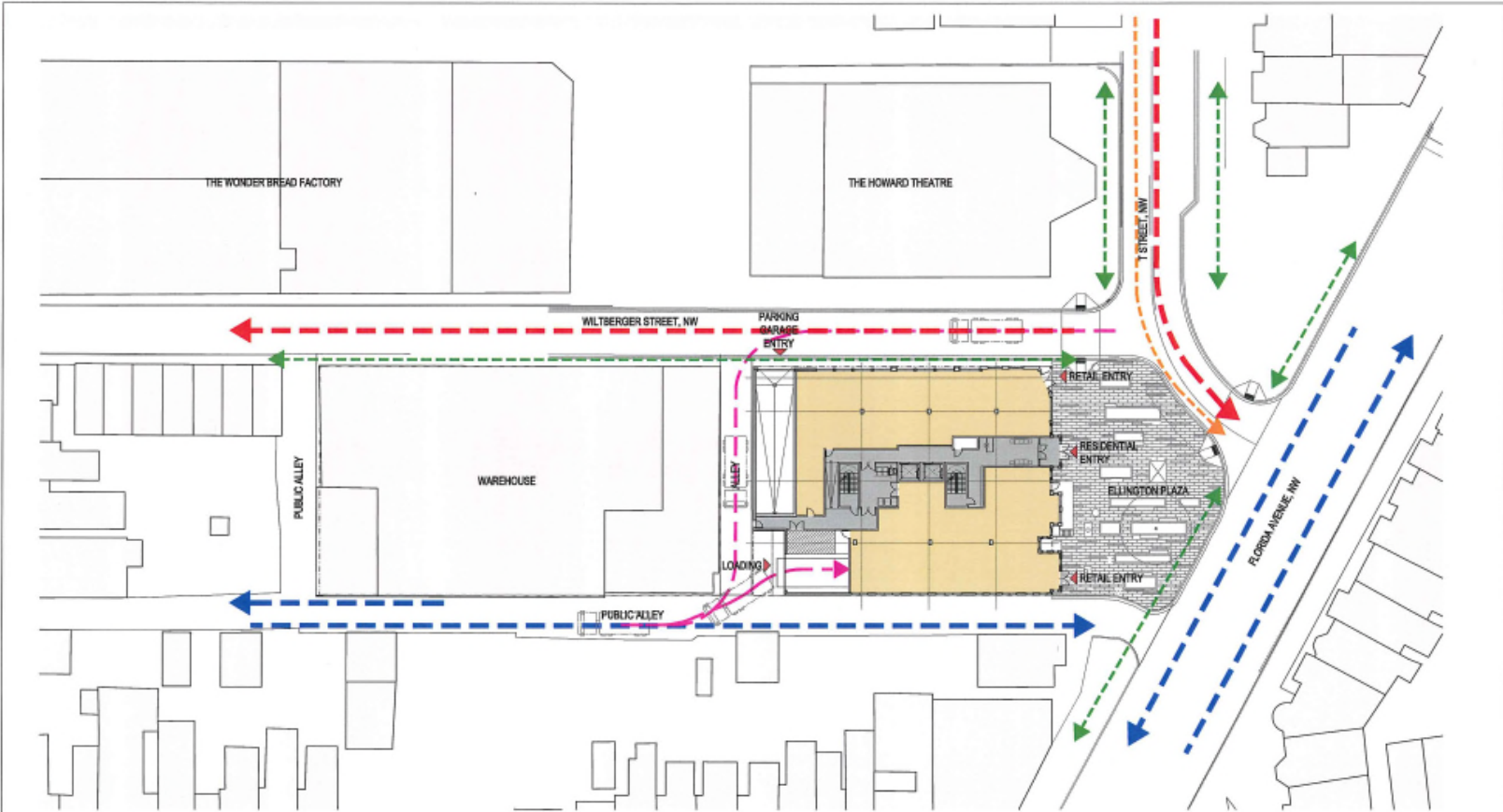


Monument Realty
 1750 K Street, NW - Suite 600
 Washington, DC 20005
 (P) 202-777-3500 (F) 202-777-3000

12-06-2015

12-06-2015 11:58:30 AM \\server\pna\working\12-06-2015_11-58-30 AM

COPYRIGHT © 2015 PNA ARCHITECTS, PLLC



←→ 2 WAY STREET
 ←→ 1 WAY STREET
 ←→ PEDESTRIAN CIRCULATION
 ←→ BIKES
 ←→ TRUCK PATH
 ① SITE PLAN
 SCALE: 1" = 40'-0"



T STREET, NW

T Street, NW
 Washington, DC 20018
 Square: 441 Lot No: 32, 33, 35, 352 Zone: C-2-B / ARTS

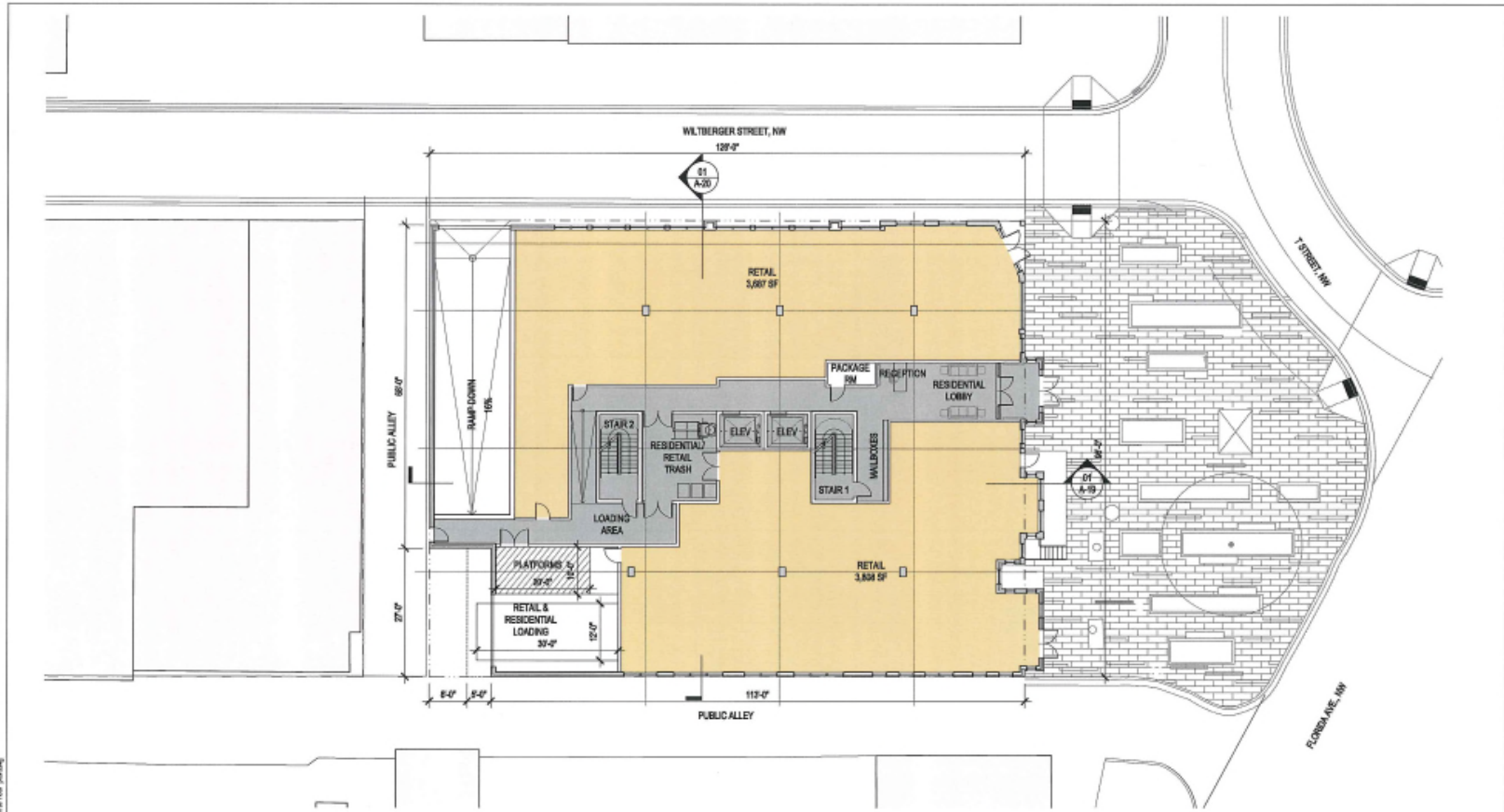
 PGN Architects, PLLC
 215 7th Street SE - Suite 201
 Washington, DC 20003
 (P) 202.622.8888 (F) 202.622.0908

 Monsieur Realty
 1700 K Street, NW - Suite 800
 Washington, DC 20006
 (P) 202.777-8500 (F) 202.777-3520

SITE PLAN | A-01
 12-08-2015

12-08-2015 11:45 AM C:\Users\jgibson\Documents\T Street NW\12-08-2015_Site Plan.dwg

COMPILED BY PGN ARCHITECTS, PLLC



1 FIRST FLOOR PLAN
SCALE: 1/4" = 1'-0"



T STREET, NW

FIRST FLOOR PLAN | A-02

T Street, NW
Washington, DC 20018
Square 441 Lot No: 32, 33, 35, 652 Zone: C-2-B / ARTS

PGN Architects, PLLC
210 7th Street SE - Suite 301
Washington, DC 20003
(P) 202-632-2865 (F) 202-632-2868

Document Ready
1700 K Street, NW - Suite 100
Washington, DC 20008
(P) 202-777-2500 (F) 202-777-2020

12-08-2015

COPYRIGHT © 2015 PGN ARCHITECTS, PLLC